





# Introducing **‘5 for 5’**

**Unlock up to 5% extra savings on bundles of 5  
with HPE Networking Instant On SMB offers!**

**Simplify your customers network with HPE Networking Instant On —  
the ultimate small business solution.**

Ideal for businesses with limited IT resources, Instant On offers lightning-fast, secure connectivity in an affordable, easy-to-setup package. Empower your business without any hassle.

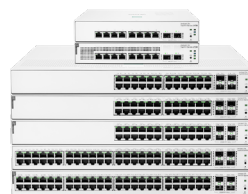
 <b>SMB Offers</b>		
Promotion	All SKUs	Bundle size:
Instant On Switches	1930, 1960	<b>5</b>
Instant On Access Points 	AP21, AP22, AP25	
Instant On Accessories	Transceivers	

Contact your local HPE Networking Instant On representative for promotional details.

## Instant On Switch Series 1930

### Mid-range smart-managed switches

- Smart-managed L2+ switching
- 10GbE SFP+ uplinks (8-port model with 1GbE SFP ports)
- Class 4 PoE power enabled on all ports, up to 370W PoE budget
- Built-in security with port-based ACL, 802.1X access control, ARP and DoS attack protection
- Management flexibility with Instant On cloud-based web portal, mobile app, or local web UI

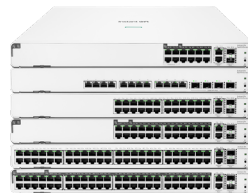


Get campaign assets →

## Instant On Switch Series 1960

### Advanced smart-managed switches

- For environments when performance matter
- 4 Access Switches and one 10GbE aggregator
- 10GbE flexibility with copper and fiber connections
- Class 6 PoE support on select ports and up to 600W of PoE budget
- Easily stack up to 4 switches
- L2+ switching
- 2.5GbE ports to connect high-end access points — SKU (S0F35A)



Get campaign assets →

## Instant On Access Point AP21

### Wi-Fi 6 entry-level access point

- Cost-effective Wi-Fi 6 access point
- Small footprint for small spaces
- Easily mix and match with any other Instant On access point
- Smart Mesh support
- 1.5 Gbps max data rate
- Recommended for up to 50 clients



Get campaign assets →

## Instant On Access Point AP22

### Wi-Fi 6 mid-range access point

- Dual radio, dual band Wi-Fi 6 access point
- Easily segment guest and employee networks
- Enterprise grade security — TPM chipset, WPA3 and Open Enhanced encryption, VLANs, and client isolation
- Captive portal
- Automatic roaming — uninterrupted service as they move throughout your business
- 1.8 Gbps max data rate
- Recommended for up to 75 clients



Get campaign assets →

## Instant On Access Point AP25

### Wi-Fi 6 high-performance AP

- High-end Wi-Fi 6 access point for higher capacity, speed and coverage
- 5.2 Gbps max data rate boosts productivity and lowers latency
- Higher-performing Smart Mesh with HE160 channel width
- 2.5 GbE uplink for no bottleneck
- AI-powered smart management — optimizes performance automatically
- Recommended for up to 100 clients



Get campaign assets →

## Instant On Transceiver 1GbE

- 1GbE Fiber connectivity for switch interconnection. Transceiver for Multimode OM2 fiber up to 500 meters
- Can be used in a SFP or SFP+ port
- Tested and supported on Instant On switches



## Instant On Transceiver 10 GbE

- 10GbE Fiber connectivity for switch interconnection. Transceiver for Multimode OM3 fiber up to 300 meters
- Can only be used in a SFP+ port
- Tested and supported on Instant On switches



## HPE Networking Instant On campaign assets

- Access a wealth of additional marketing campaigns to support you in selling your Instant On offers
- Choose from product campaigns to create your marketing presence and assets, such as online banners, emails, social media posts, and video content, to help drive customers to purchase online
- Content available in EN, FR, IT, DE, ES

Generic Instant On assets

ACTION Partner campaign assets

Instant On campaign assets

Learn more at <https://instant-on.hpe.com>

### Terms and Conditions

All promotions and incentives come with specified terms and conditions of sale and claiming. This incentive is available in Europe, Middle East and Africa only and expires November 7th 2025.

Terms and conditions may vary by country.

Resellers should contact their nominated distribution partner for pricing and always quoting requests.

This promotion MAY NOT be combined with any other special pricing, deal registration or promotional offers.

HPE reserves the right to terminate, alter, or modify its terms and conditions at any time.

© Copyright 2025 Hewlett Packard Enterprise Development LP. The information contained herein is subject to change without notice. The only warranties for Hewlett Packard Enterprise products and services are set forth in the express warranty statements accompanying such products and services. Nothing herein should be construed as constituting an additional warranty. Hewlett Packard Enterprise shall not be liable for technical or editorial errors or omissions contained herein.

Trademark acknowledgments if needed. All third-party marks are property of their respective owners.

HPE-NW-IO\_Promo-Flyer\_5for5\_050525