

THE BRANCH CHALLENGE



**WAN
COMPLEXITY**



**USER
EXPERIENCE**



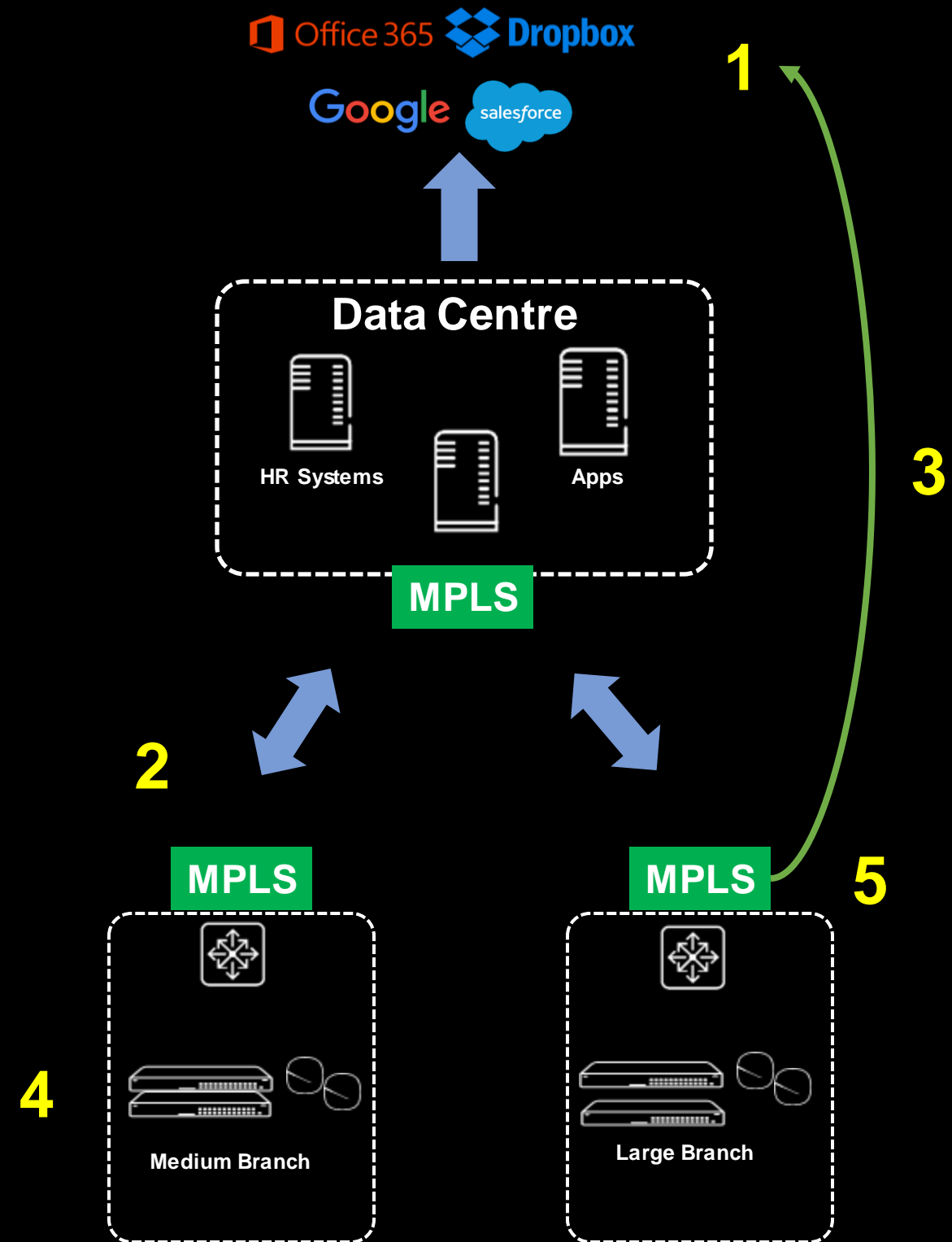
**BRANCH
SECURITY**



**LIMITED IT
RESOURCES**

Architecture challenges

1. SaaS Applications from DC
2. Expensive BW on Private WAN
3. Performance and reliability tradeoffs
4. Complex branch infrastructure and ops
5. Security challenges due to IoT, Mobility, etc



SD-WAN Only Solves Part of the Problem



Private WAN is complex and expensive



SaaS applications are backhauled to the data center



Increased security risk from the rise in IoT



Device sprawl and static configurations



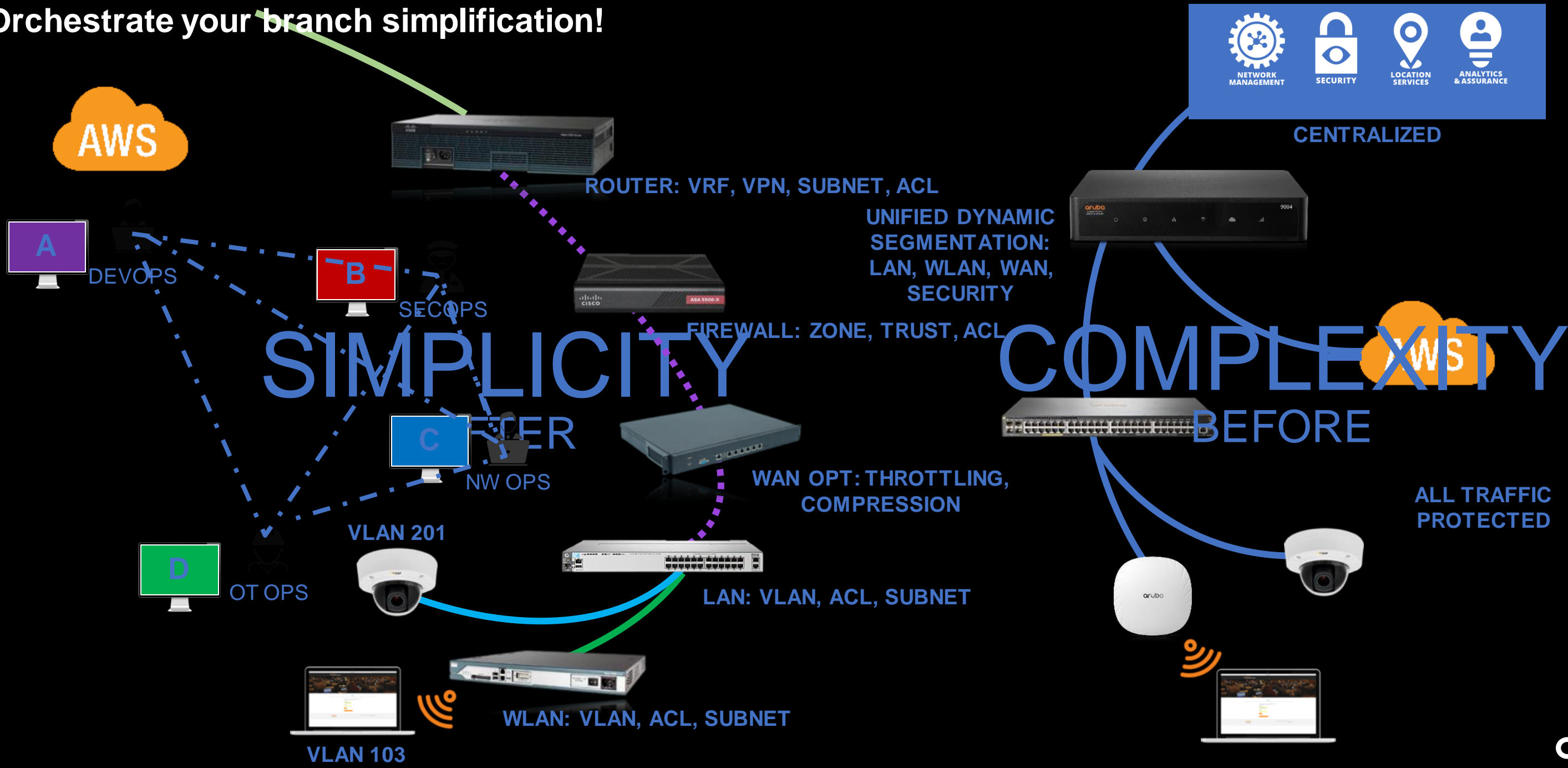
WAN Challenges



BRANCH Challenges

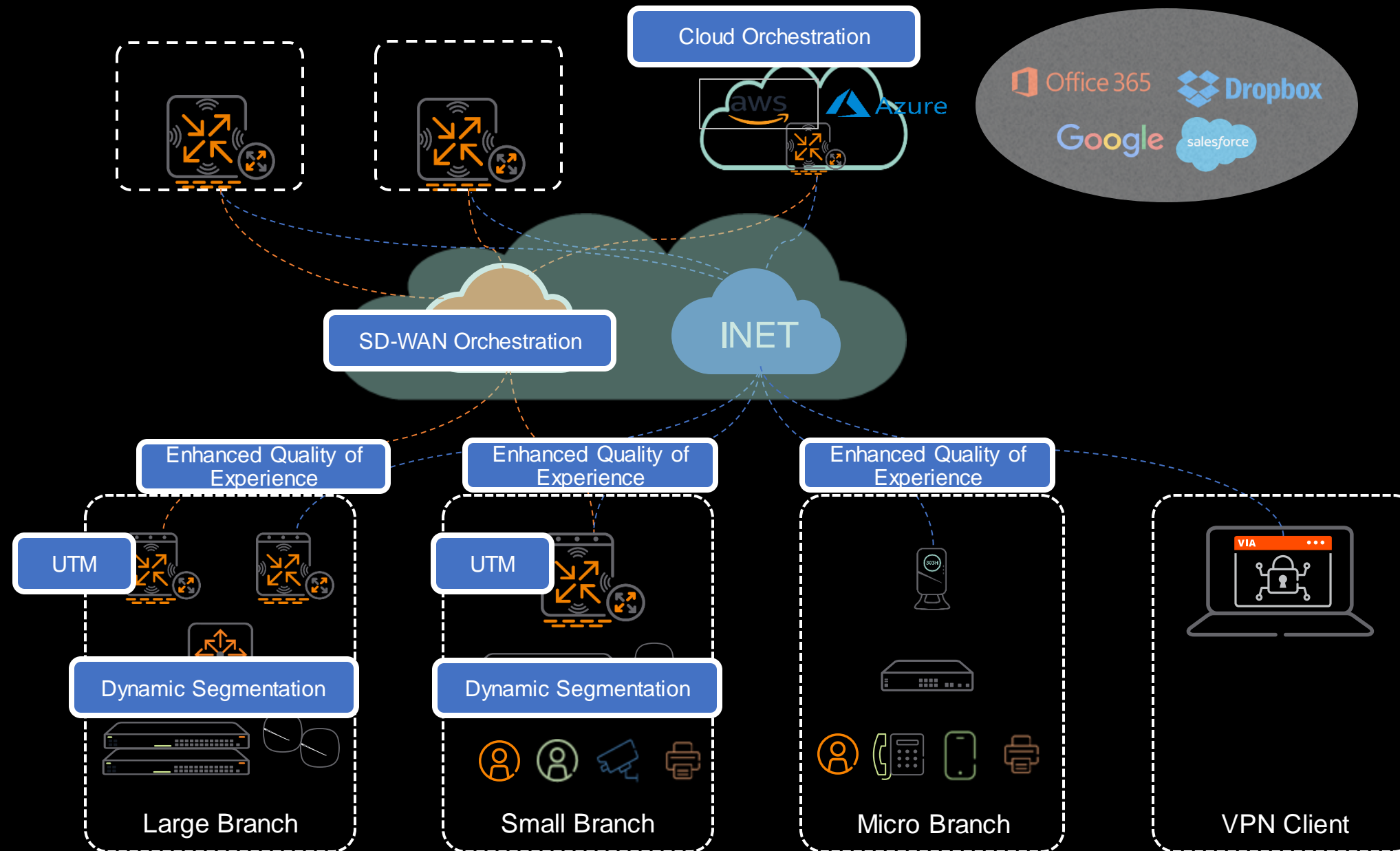
Branch Transformation

Orchestrate your branch simplification!



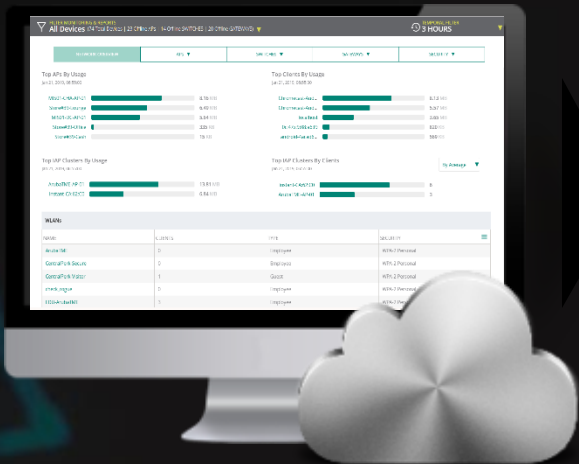
SD-Branch Solution Overview

Aruba Central
Management and
Control



Aruba Central – End to end Network Service

Experience-First
Management



LAN / WAN / WLAN



Aruba-OS
Switches

Security
Gateways

Instant
Access Points

Value Added Services

Guest
Wi-Fi

Presence
Analytics

Connectivity
Health

SD-WAN

Security



Streamlined provisioning & workflow-
driven usage models

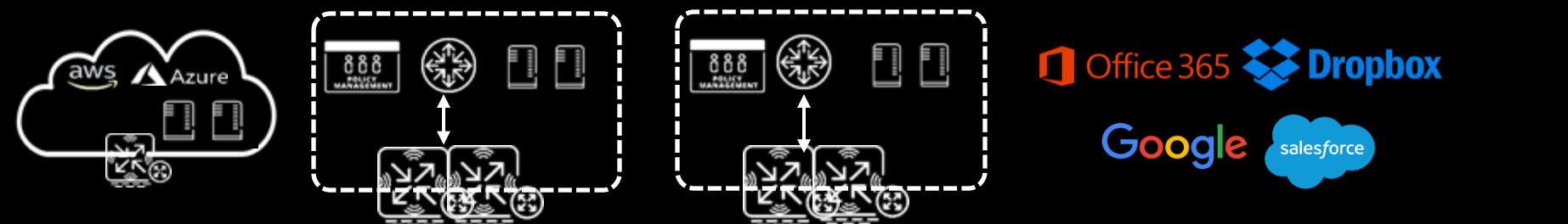
Comprehensive management &
intelligent automated insights

Platform integrated mobile and
IoT device profiling

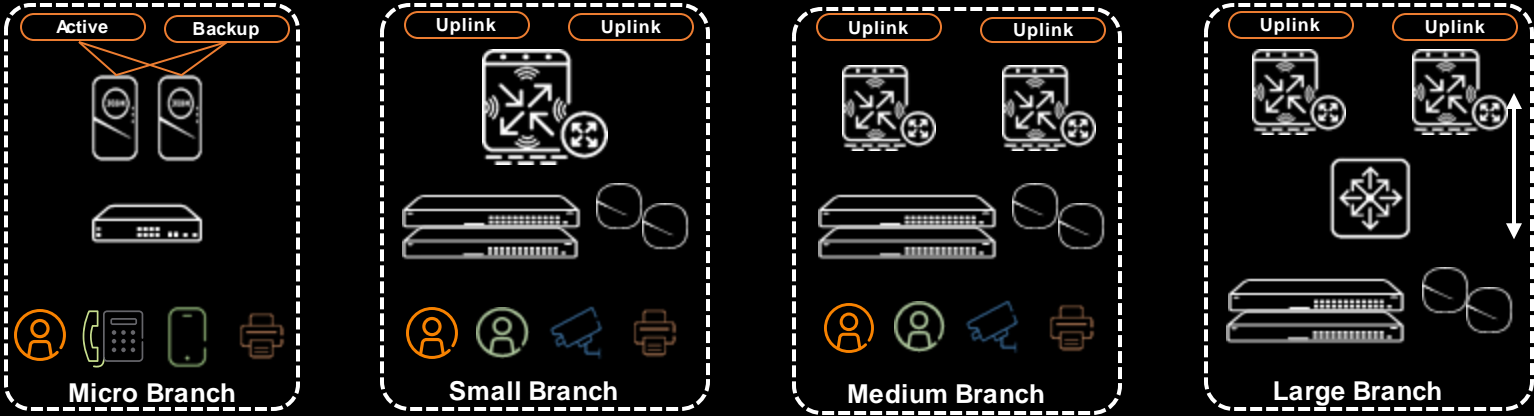
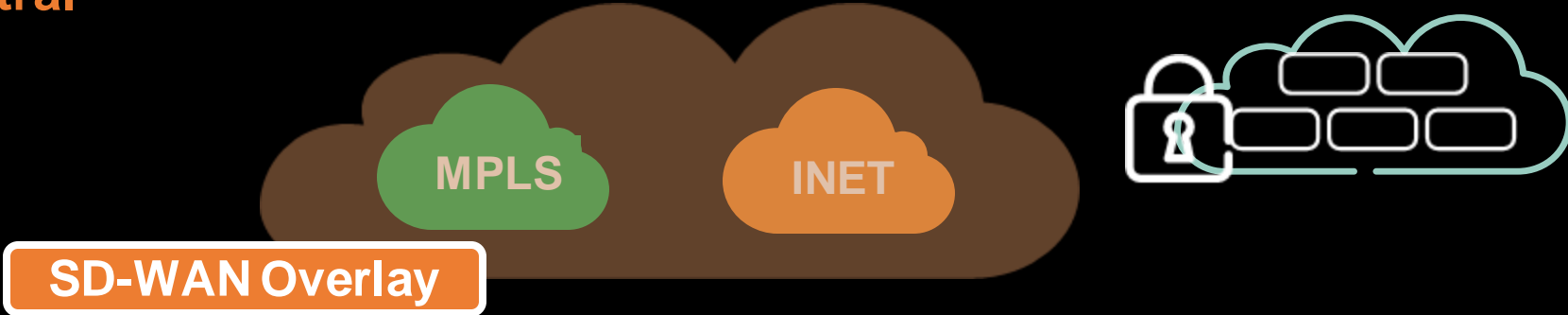
Built-In APIs for integration with
3rd party software solutions

Extensibility via REST APIs
(Configuration, Monitoring, Alerts
and Secure Access)

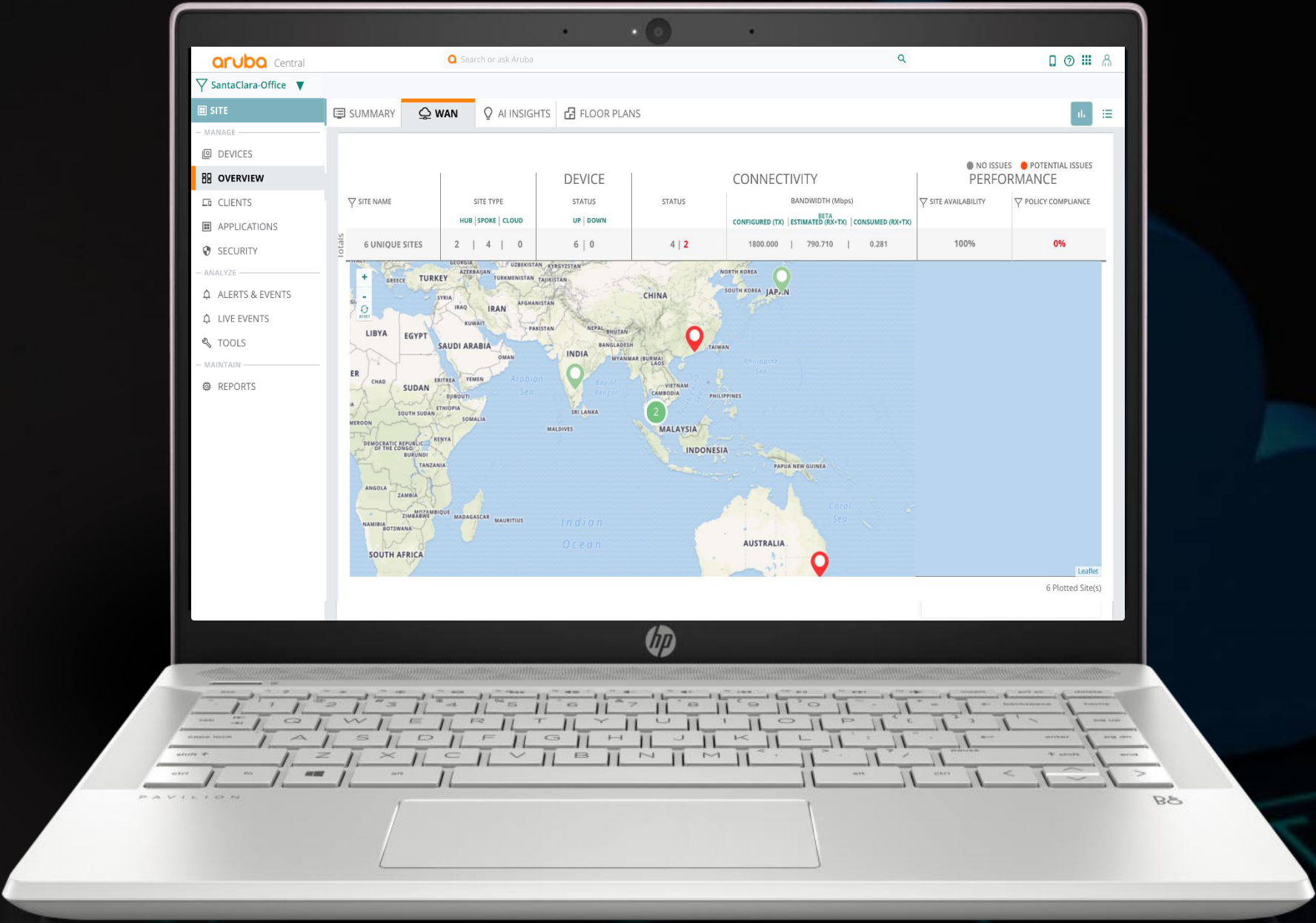
SOFTWARE DEFINED **BRANCH**



- 1. Streamlined Branch Operations with **Aruba Central**
- 2. Cloud-Native SD-WAN **Orchestration**
- 3. User Experience **Optimization**
- 4. End to end **Visibility and Security**



ARUBA CENTRAL – BRANCH NETWORK END-TO-END



STREAMLINED OPERATIONS

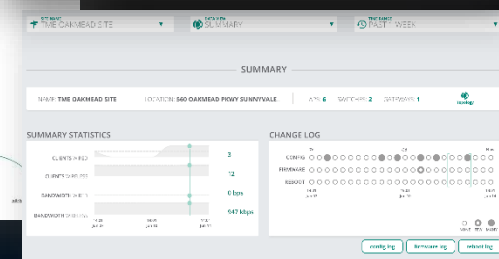
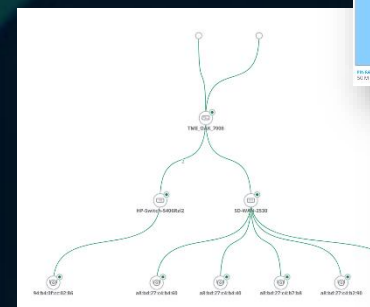
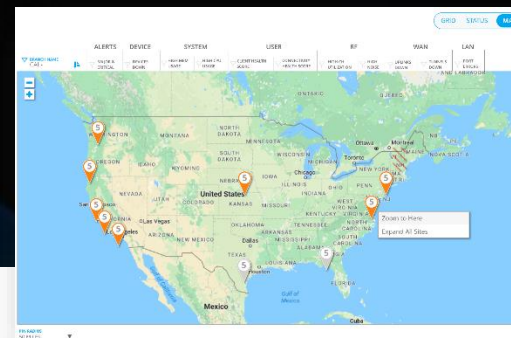
1

New Site Job

SITE INSTALLATIONS					
SITE NAME	CITY	STATUS	INSTALLED DEVICES	INSTALLATION DATE	
6 UNIQUE SITES		0 3 3	2 0 2		
Salzburg	Salzburg	In Progress	0 0 1	Tue May 29 2018	
EMEA-ATM-18	Siberik	In Progress	1 0 1	Tue May 29 2018	
TME Oakmead Site	Sunnyvale	In Progress	1 0 0	Tue May 15 2018	
TME Santa Clara Site	Sunnyvale	Pending			
SEEL-US	Sunnyvale	Pending			
SmallSite	Independence,	Pending			

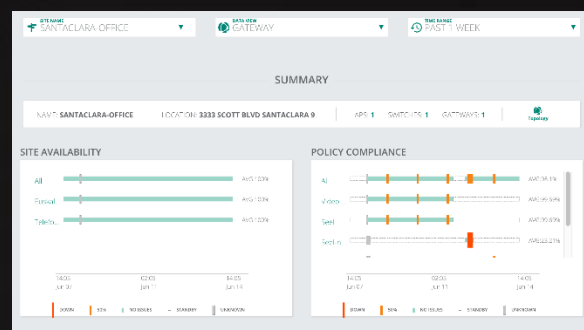
2

Installer scans devices



3

Devices geotagged to Branch site



Report



Alert

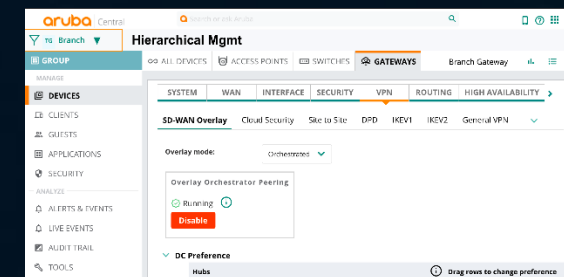


5

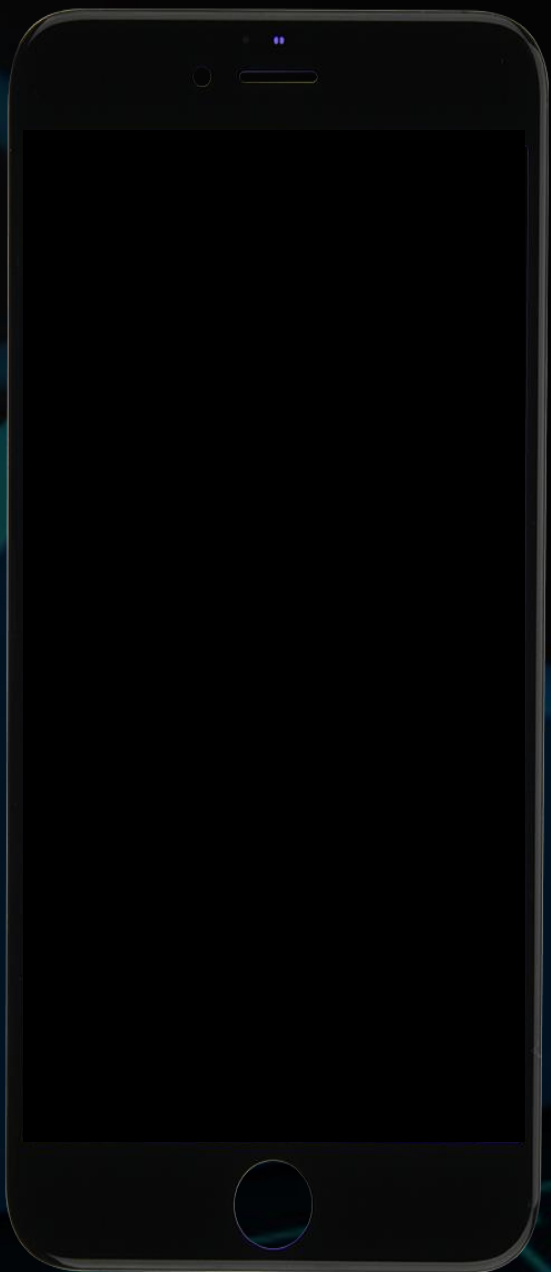
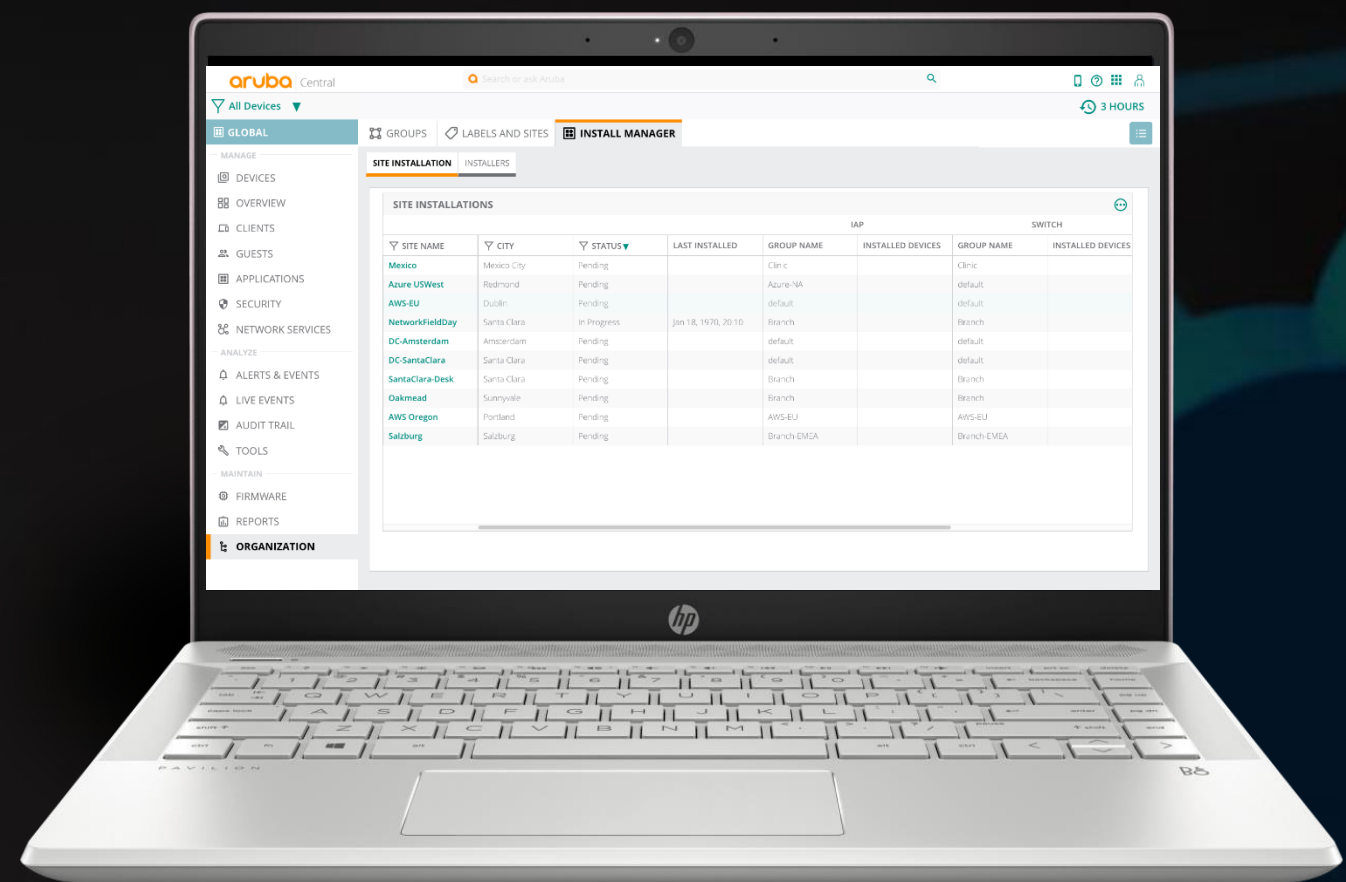
Proactive alerting/reporting on a site/group basis

4

Hierarchical config pushed Auto SW upgrade

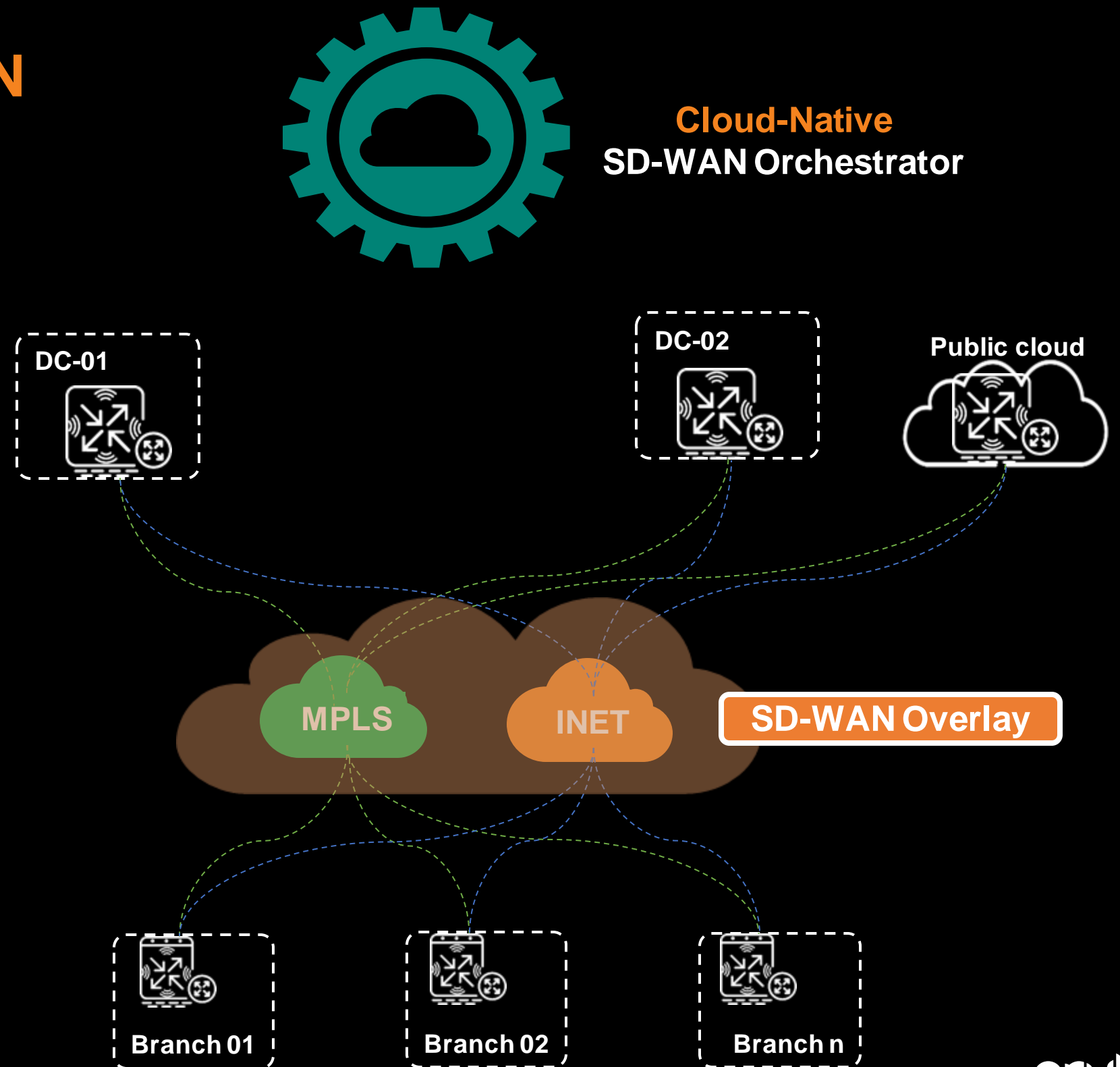


DEMO – STREAMLINED OPERATIONS



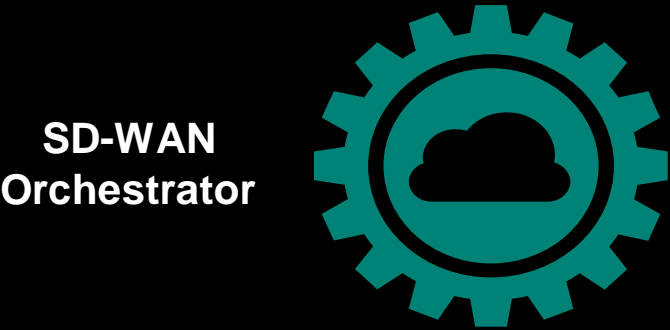
SD-WAN ORCHESTRATION

- Centralized, cloud native Control Plane
 - Centralized key management
 - Horizontally scalable
- Policy driven SD-WAN overlay
 - Auto-discovers WAN links across the network
 - Orchestrates overlay routes and tunnels based on topology needs
- Orchestrated virtual Gateway for IaaS

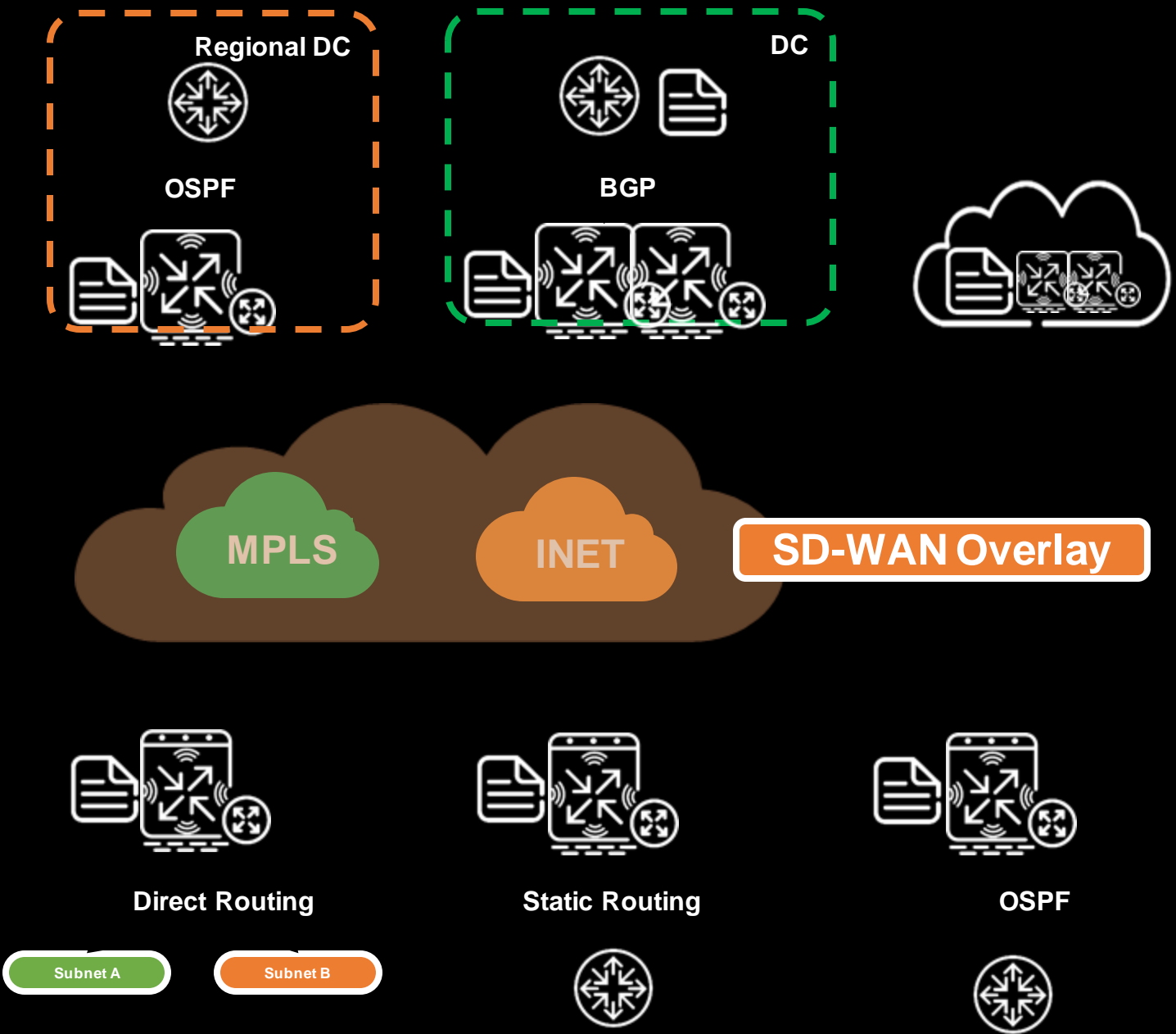


SD-WAN ORCHESTRATION

- Complete "router as a service"
 - Path symmetry, routing attributes, route filtering...



GW	Network	NextHop	Attribs...
BGW-01			
BGW-01			
BGW-01			
...			



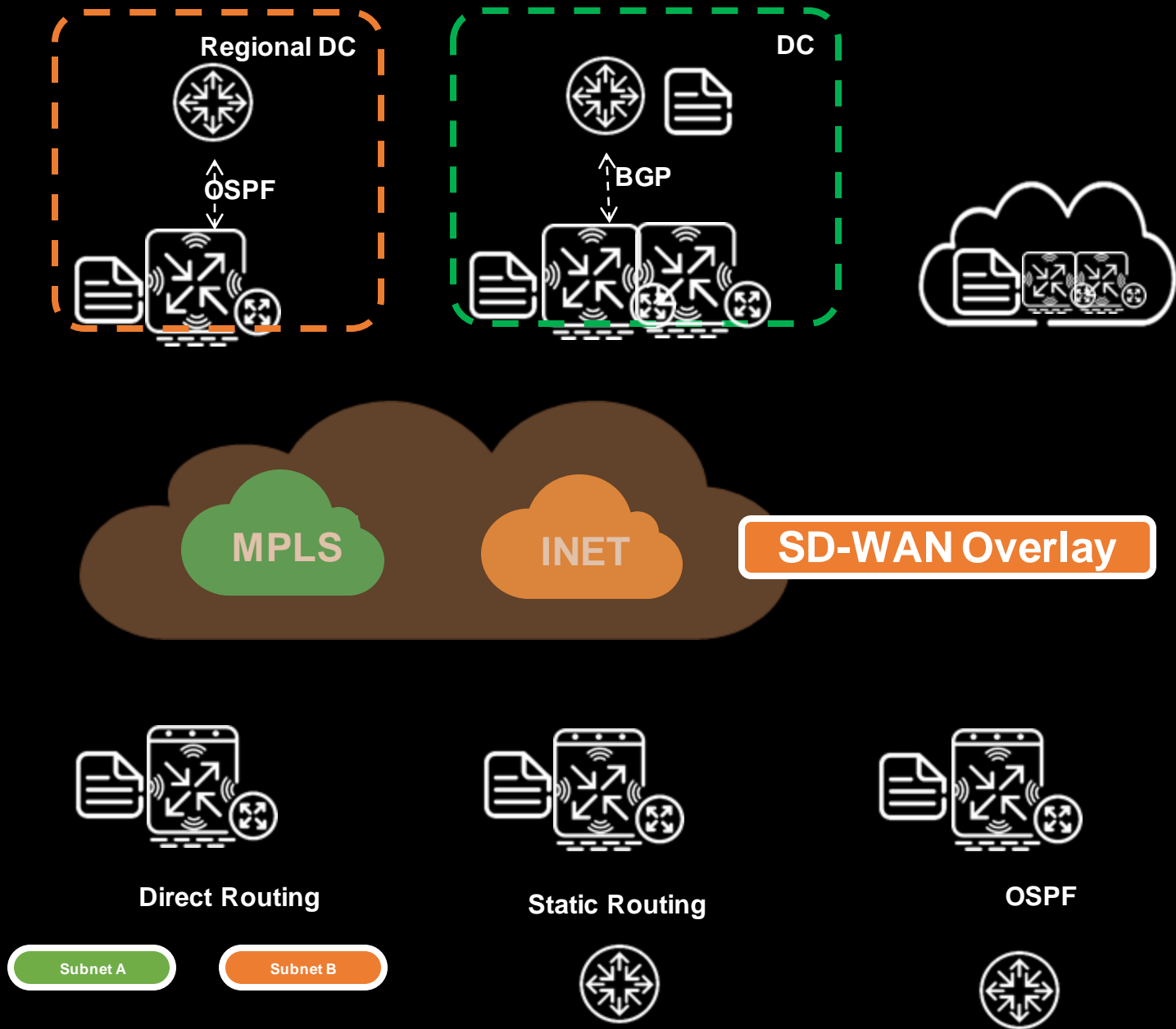
SD-WAN ORCHESTRATION

- Complete "router as a service"
 - Path symmetry, routing attributes, route filtering...

SD-WAN
Orchestrator



GW	Network	NextHop	Attribs...
BGW-01	10.96.0.0/16 (branches)	R-DC	Community AS-Path...
BGW-01	10.0.0.0/8 172.16.0.0/12 (summary-global)	Main-DC	Community AS-Path...
BGW-01	10.127.0.0/16 (AWS-VPC)	Cloud	Community AS-Path...
...	

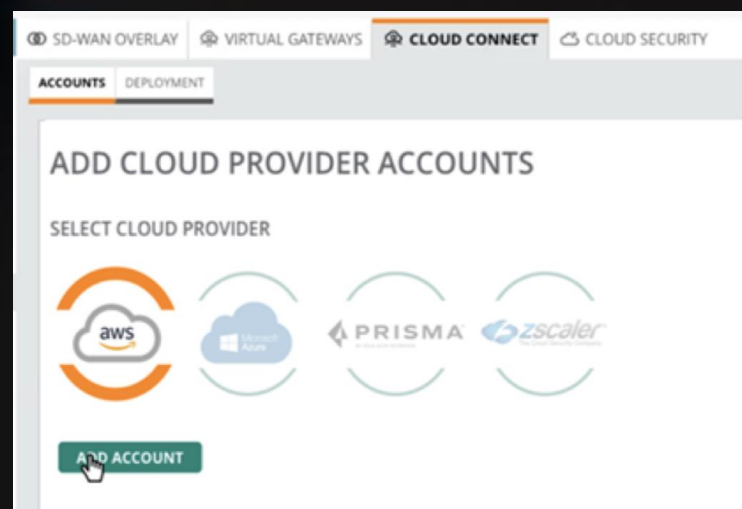
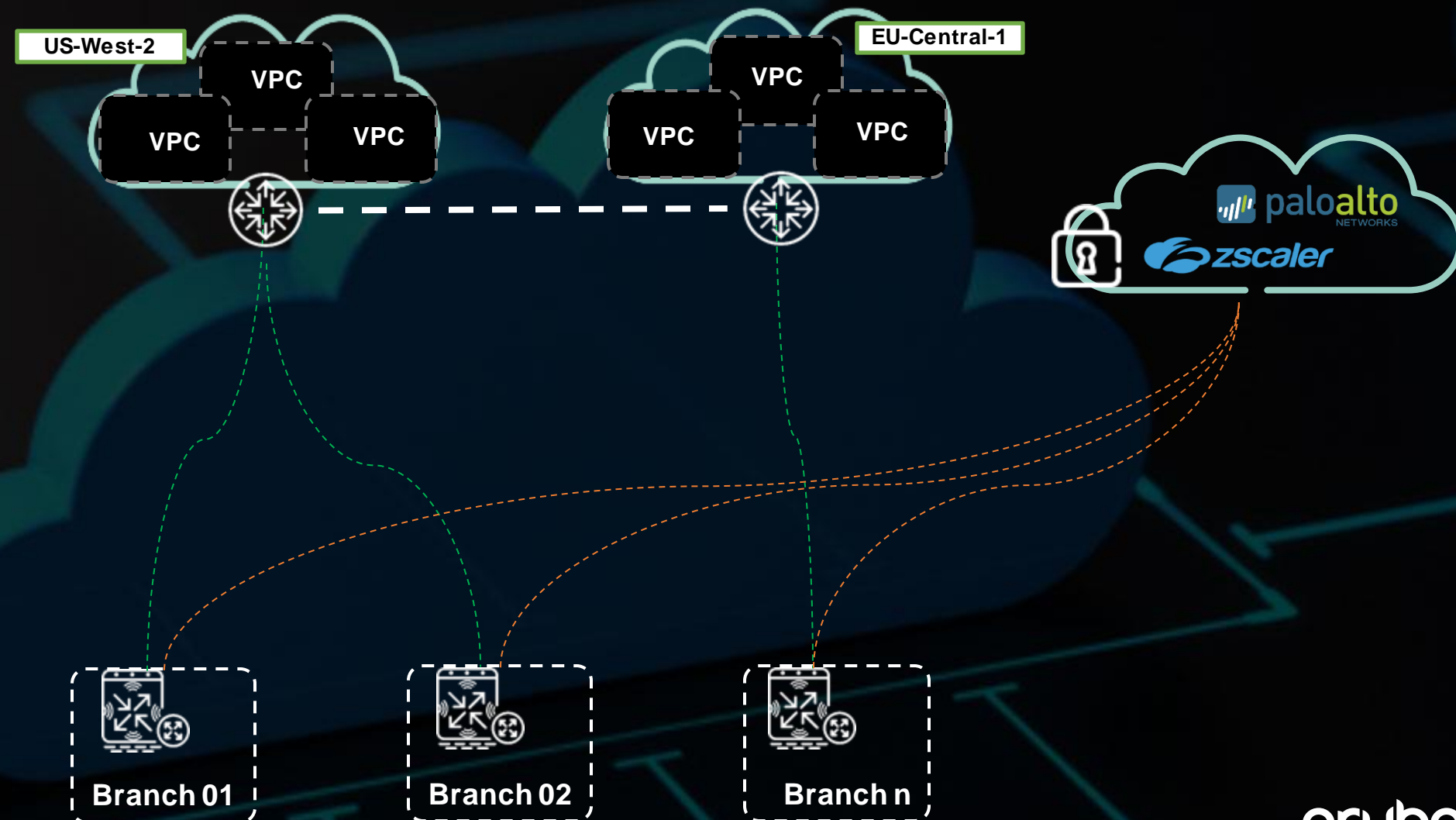


SD-WAN CLOUD-CONNECT

Cloud-Native
SD-WAN Orchestrator



- Cloud IaaS connectivity Orchestrated by Aruba Central
 - Orchestrated tunnels
 - Intra-region connectivity
- Cloud Security Orchestration
 - Orchestrated tunnels
 - Tunnel to closest node



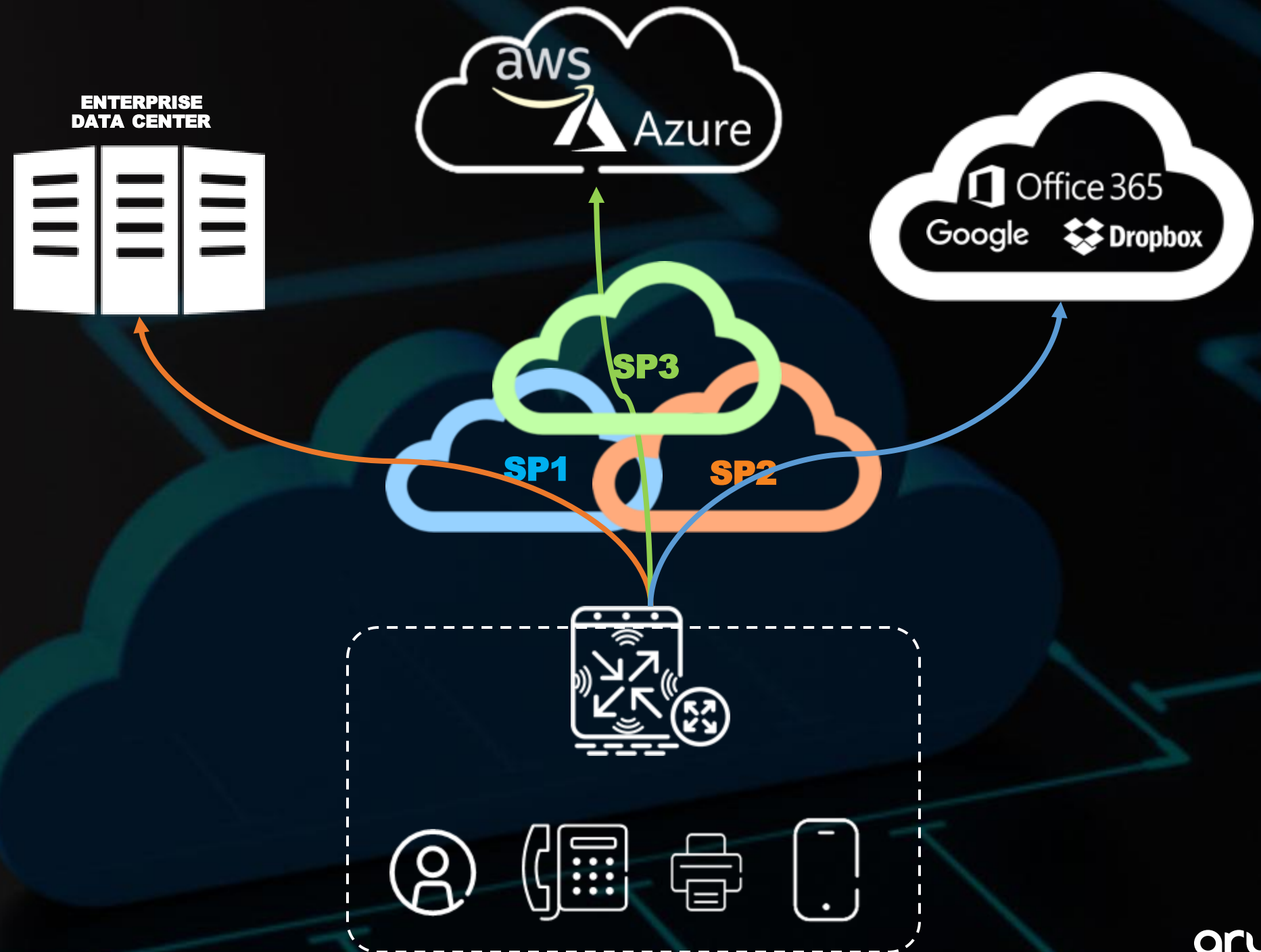
DEMO – CLOUD CONNECT

<https://youtu.be/U2MDvXfgSXU?t=1793>



USER EXPERIENCE

- Dynamic Path Steering
 - User, Application, Destination
 - SLA (latency, jitter, loss, utilization)
- Critical SaaS apps
 - HTTP Probes to the app
 - Select best path
 - First packet classification



UNIFIED BRANCH SECURITY



App-User Aware Firewall



App Classification



Deep Packet Inspection



Web content & URL filtering



App & URL reputation



Intrusion Detection & Prevention System



Cloud Security



Threat Visibility

- Sliceable threat trending overtime
- Overlay with app/user launch and network direction
- Threat source and impact

Policy driven enforcement

- Out of box IDS / IPS policies
- User defined whitelisting
- False Positive Management flow



Correlate to Manage Incident

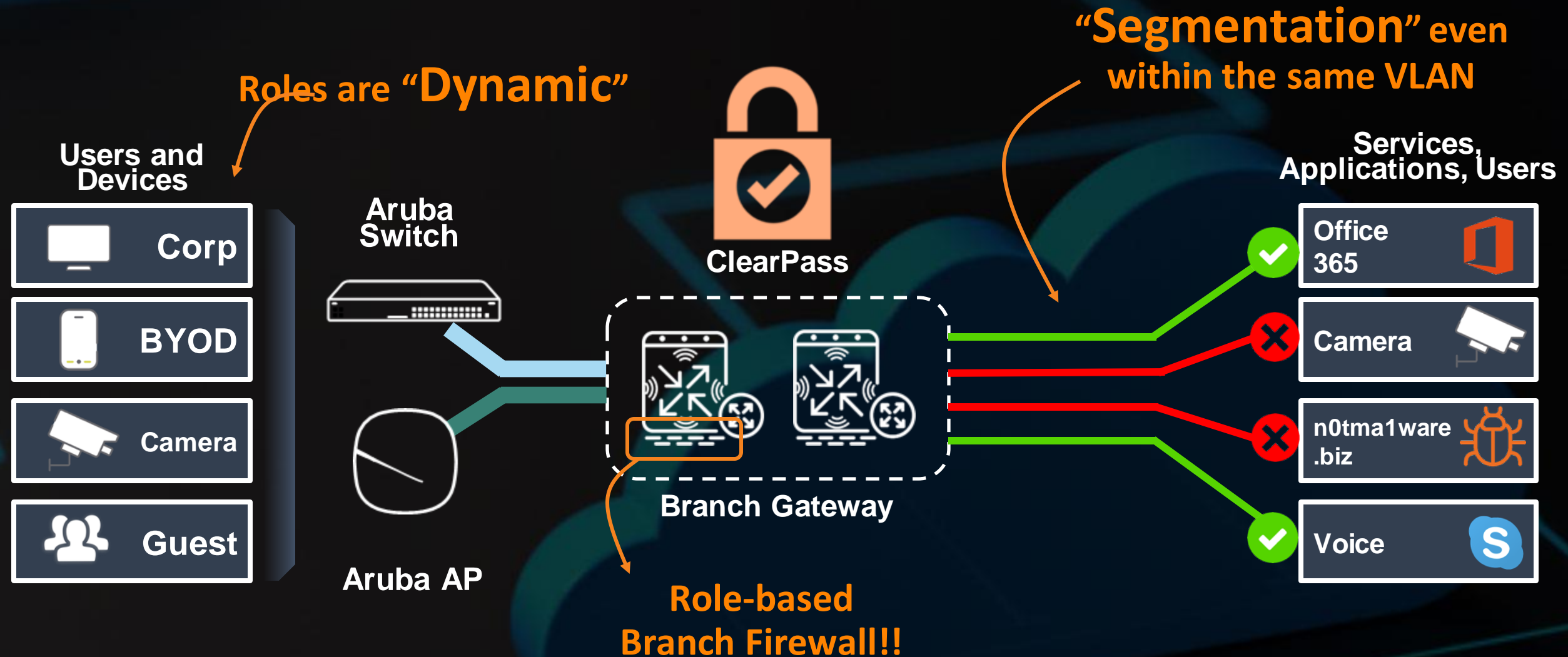
- Externalizable events streamed to SOC
- Alert and notifications based on business impact
- Stream events to REST endpoints

DEMO – UTM



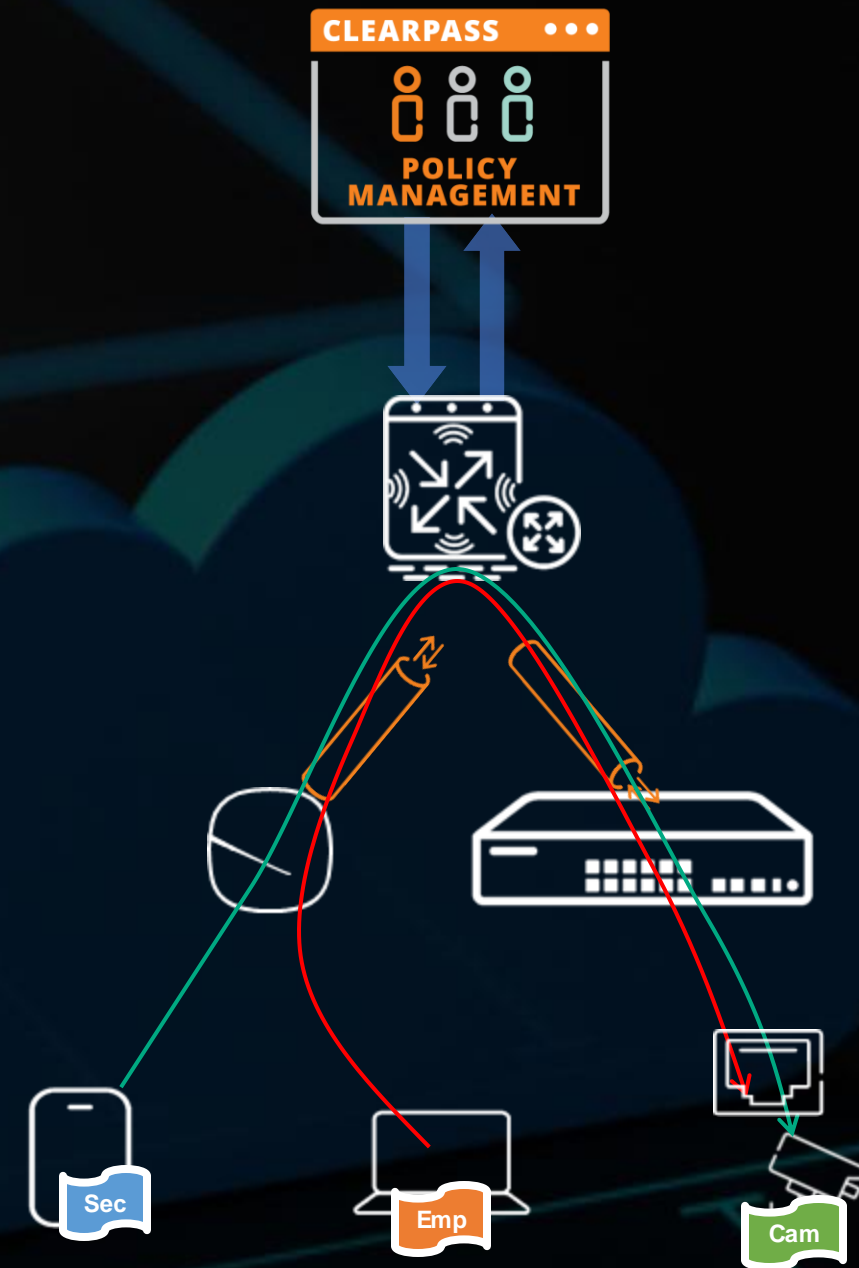
- Threats Over Time
 - User/App Launch & Network Traffic vs Threat
 - Threat Trend
- Threat Metrics
 - By category, type and severity
 - Threat prevalence
 - Impacted users / devices
 - Source and level of impact
- Drilldowns
- SIEM integration (splunk 1st)

DYNAMIC SEGMENTATION

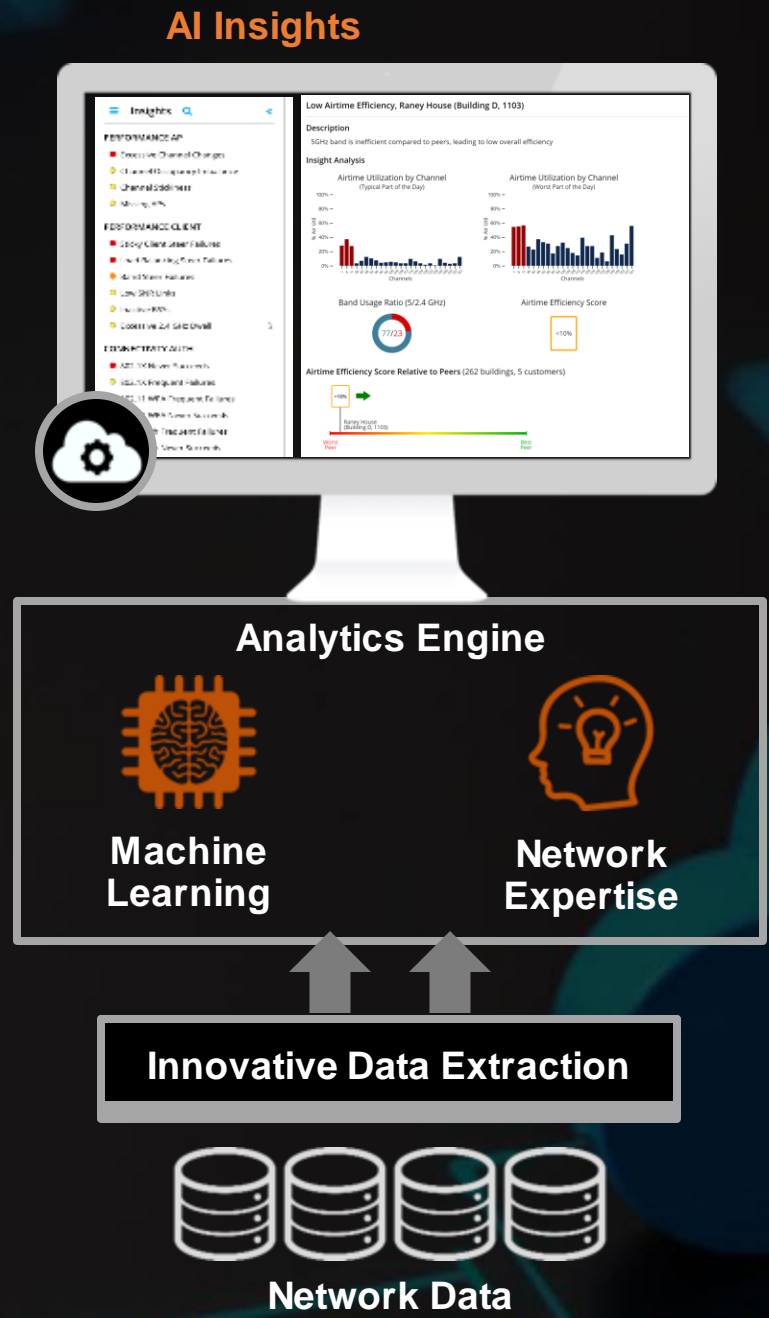


USER-CENTRIC SECURITY

- 1 ClearPass identifies roles based on credentials or profile
- 2 Wired and wireless clients in the same subnet
- 3 Wired and wireless client tunneled to firewall
- 4 Security policies control intra-VLAN communication
- 5 Users and policies just use dynamic objects



AI/ML POWERED TROUBLESHOOTING

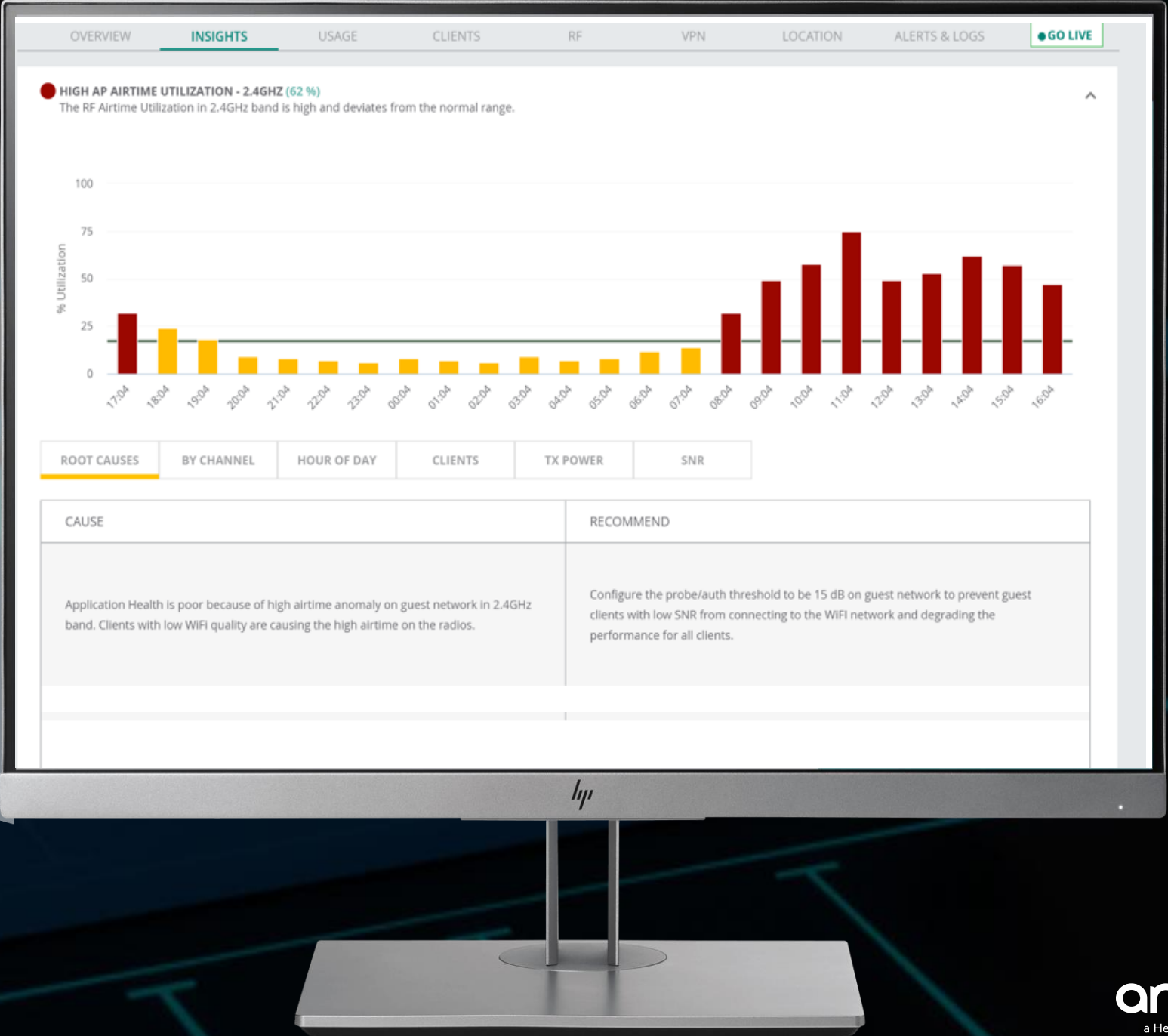


Insights for improving network performance & user experience

Leveraging **Machine Learning**, Aruba **network expertise** & latest **Cloud** technologies to transform existing network data into advanced **network analytics**

AI/ML POWERED TROUBLESHOOTING

NETINSIGHT MACHINE LEARNING ENGINE



BENEFITS OF **ARUBA SD-BRANCH**



**CLOUD-NATIVE
ORCHESTRATION**



**MANAGE
EXPERIENCE**



**END-TO-END
SECURITY**



**SIMPLIFIED
OPERATIONS**